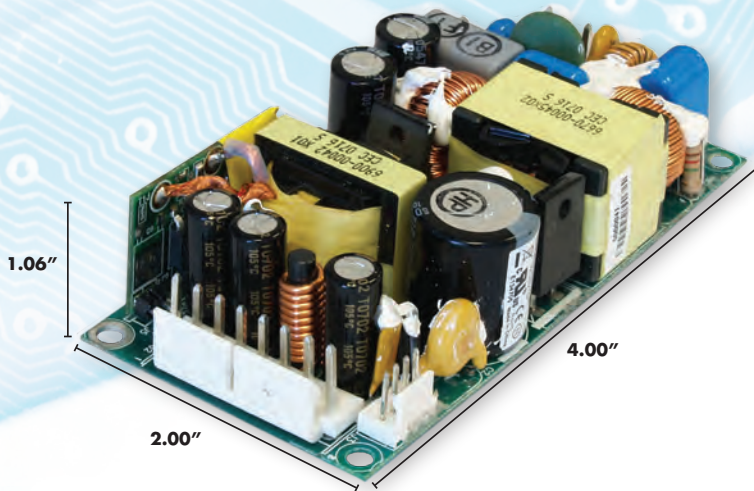


HD160 Series

160 Watt High Density AC/DC Power Supply



PRODUCT DESCRIPTION

The HD160 Series of switching power supplies utilizes advanced component and circuit technologies to deliver the industry's smallest 160 Watt switcher. The series has been designed for Medical, Telecom and Industrial Applications to satisfy 1U height considerations, the package measures only 4.00 x 2.00 x 1.06". All models offer universal AC input with active power factor correction (PFC), flexible output configurations and compliance to worldwide safety and EMC standards. Features include:

- 160W compact high-density models
- The most power in the industry standard 2 x 4" Footprint
- Universal AC input with PFC
- Low Profile / 1U Package
- Convection cooled operation up to 100 Watts
- 12V / 500mA Auxillary Output to power Fan
- RoHS compliant
- High efficiency operation of 90% (Typical)

INPUT

AC Input Voltage	90-264VAC (47-63Hz) or 170-370 VDC
Input Current	2A Max Continuous
Input Reflected Ripple	FCC 68 part 15 Class B
Power Factor Correction	0.98 at 220VAC (typical)
Input Line Protection	3A 250VAC IEC Type
Hold-up Time	>16msec @ Full Load
Efficiency	90% Typical
Leakage	100/200uA @ 115/230 VAC (max)

OUTPUT

Line Regulation	$\pm 0.1\%$ for V_{in} (min.) to V_{in} (max.)
Load Regulation	$V1 = \pm 1\%$ / $V2 = \pm 5\%$ Max
Adjustment Range	$\pm 5\%$ Minimum
Min. Load Requirement	None
Ripple	$\pm 1\%$ (20MHz)
Transient Response	Better than 5% For 50% Step Load
Over-Voltage Protection	115-150% (Latched Shut-down)
Turn-On Delay	1 Sec. Max.
Initial Setting Accuracy	$\pm 1\%$
Over-Current	110-130% of I-Max (Auto-Recovery)
Aux Fan Output	12 VDC @ 500mA

ELECTROMAGNETIC COMPATIBILITY

Electrostatic Discharge	EN61000-4-2, ± 4 KV Contact / ± 8 KV Air Discharge
Radiated Susceptibility	EN61000-4-3, 26-1000MHz, 10V/M, 80% AM
EFT / Bursts	EN61000-4-4, ± 2 KV
Surges	EN61000-4-5, ± 2 KV Line-Earth, ± 1 KV Line-Line
Conducted Immunity	EN61000-4-6, 0.15-800MHz, 10V, 80% AM
Voltage Dips	EN61000-4-11, 95% Dip & 10ms, 30% Dip & 500ms
Voltage Interruptions	EN61000-4-11, 95% Reduction, 5s
Fluctuations & Flicker	EN61000-3-3

ENVIRONMENTAL

Operation Temperature	-20 ~ +50C Derate of 2.5%/C up to +70C
Storage Temperature	-20C ~ +85C
Cooling	Forced Air Cooling 200LFM 100W Max Convection
Humidity	Up to 95% RH Non-condensing
Shock & Vibration	0.75G Peak Half Sine, 6 Axes
MTBF	>300,000 Hours

SAFETY & EMISSIONS

Safety Approvals	CSA/UL 22.2 No. 60950-1-M90 & 60601-1-M90 NEMKO EN60950-1 / EN60601-1 CE Mark (LVD)
------------------	---



HD160 Series

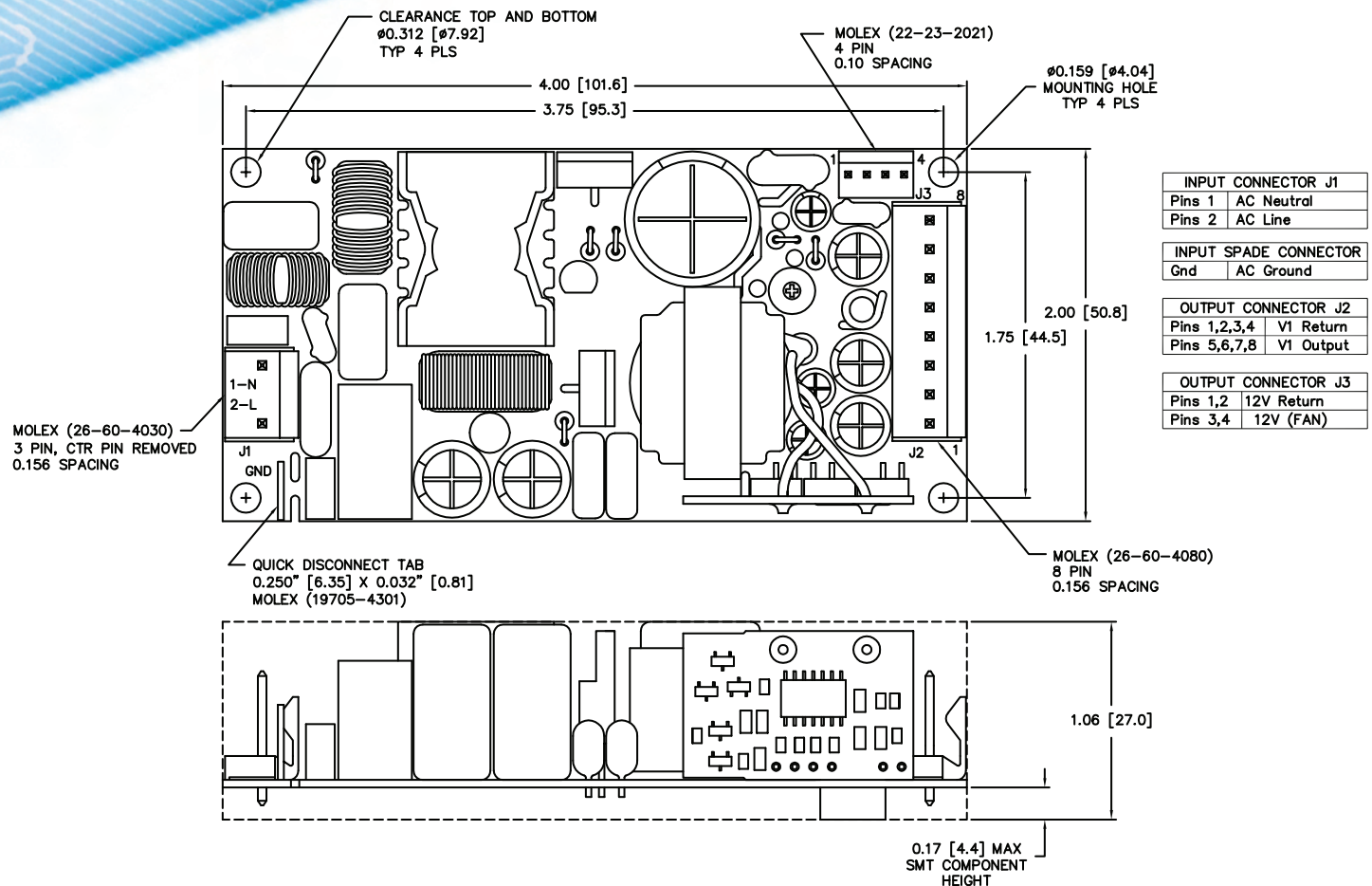
160 Watt High Density AC/DC Power Supply

Model Selection Guide

200 LFM AIRFLOW RATINGS

Model	Output Power	Output
HD160-105	100 Watts	+5V @ 20A
HD160-112	160 Watts	12V @ 13.3A
HD160-124	160 Watts	24V @ 6.66A
HD160-148	160 Watts	48V @ 3.33A

Contact factory for other voltage configurations.



DIGITAL POWER
NORTH AMERICA / ASIA
www.digipwr.com

41324 Christy Street
Fremont, CA 94538, USA
Phone (510) 657 2635
Fax (510) 353 4023
sales@digipwr.com

GRESHAM POWER
UK / EUROPE
www.greshampower.com

Gresham House, Telford Road
Salisbury, Wiltshire SP2 7PH, UK
Phone +44 (0) 1722 413 060
Fax +44 (0) 1722 413 034
enquiries@greshampower.com

TELKOOR POWER
ISRAEL
www.telkooor.com

5 Giborey Israel Street
Natanya, Israel 42293
Phone +972 9 8632333
Fax +972 9 8658444
sales@telkooor.com